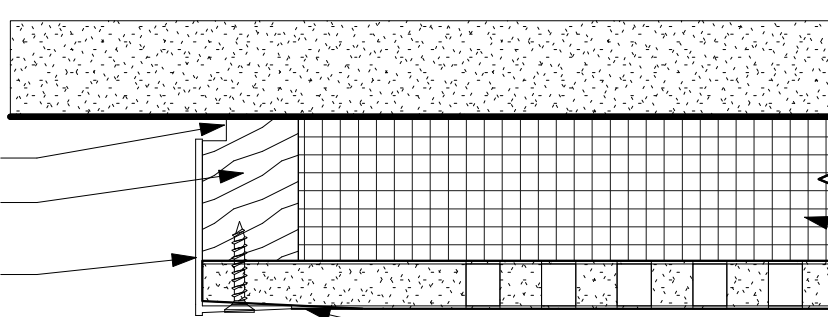


REVEAL, PAINT BLACK
HARDWOOD BLOCKING

ALUMINUM TRIM WITH
DRYWALL TRIM EDGE



EXISTING WALL

OPTIONAL SUPPLEMENTAL ACOUSTICAL
BACKER, MOUNT TO STRUCTURE

USG DANOLINE™ WALL AND CEILING
PANELS (WITH 4 SIDED TAPERED EDGE)

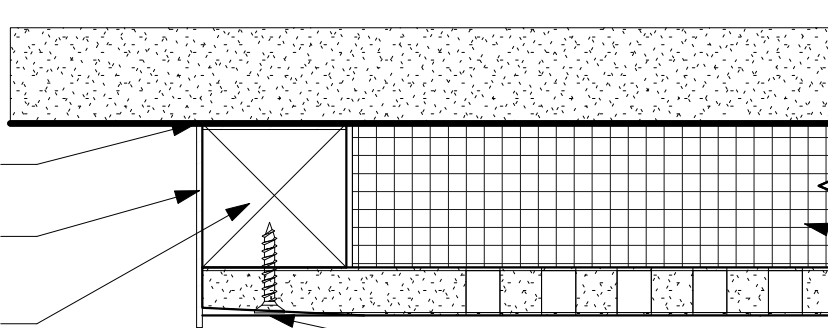
APPLY AT JOINT: USG SHEETROCK™
BRAND EASY SAND JOINT COMPOUND,
SAND SMOOTH BEFORE PAINTING

USG DANOLINE™ WALL AND CEILING PANEL WITH METAL EDGE

CAULK AT WALL

ALUMINUM TRIM (MITER AT
CORNERS, TYPICAL)

1 1/2" X 1 1/2" BLOCKING



EXISTING WALL

OPTIONAL SUPPLEMENTAL ACOUSTICAL
BACKER, MOUNT TO STRUCTURE

USG DANOLINE™ WALL AND CEILING
PANELS (WITH 4 SIDED TAPERED EDGE)

APPLY AT JOINT: USG SHEETROCK™
BRAND EASY SAND JOINT COMPOUND,
SAND SMOOTH BEFORE PAINTING

USG DANOLINE™ WALL AND CEILING PANEL - DRYWALL FLANGE/METAL EDGE



USG Corporation
550 West Adams Street
Chicago, IL 60661 USA
www.usg.com
T. 800-USG4YOU

DISCLAIMER: THE USG PRODUCT INFORMATION CONTAINED HEREIN ARE INTENDED FOR USE AS PRODUCT REFERENCE MATERIAL BY ARCHITECTS, ENGINEERS, AND OTHER DESIGN PROFESSIONALS, CONTRACTORS, BUILDING CODE OFFICIALS, OR OTHER COMPETENT CONSTRUCTION INDUSTRY TRADE PROFESSIONALS HAVING AN INTEREST IN THE SELECTION, SPECIFICATION, AND USE OF PRODUCTS MANUFACTURED BY THE SUBSIDIARIES OF USG CORPORATION. THE DRAWINGS ARE INTENDED SOLELY AS TECHNICAL SUPPORT INCIDENT TO THE SALE AND USE OF USG PRODUCTS AND NOT INTENDED TO BE A SUBSTITUTE FOR THE DESIGN REVIEW AND APPROVAL OF THE LICENSED DESIGN PROFESSIONALS FOR THE PROJECT. THESE MATERIALS MAY BE PRINTED AND/OR TRANSFERRED ELECTRONICALLY SOLELY AS NEEDED BY THE USER. BECAUSE CAD, ELECTRONIC FILES AND BIM (BUILDING INFORMATION MODELING) FILES CAN BE MODIFIED BY OTHER PARTIES, WITHOUT NOTICE OR INDICATION OF SUCH MODIFICATIONS, MODIFICATION OF USG PRODUCT CAD DRAWINGS IS THE SOLE RESPONSIBILITY OF THE DESIGN PROFESSIONAL. ©2020 USG CORPORATION.

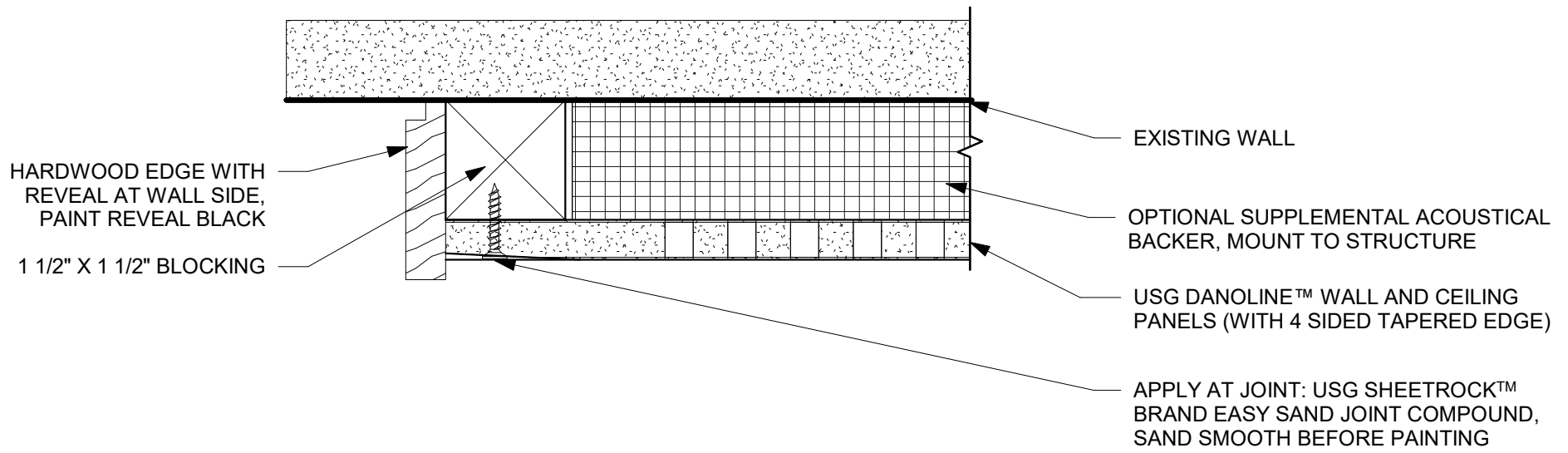
USG DANOLINE™ WALL AND CEILING PANELS FRAMED EDGE DETAILS - METAL TRIM

ISSUE RECORD:

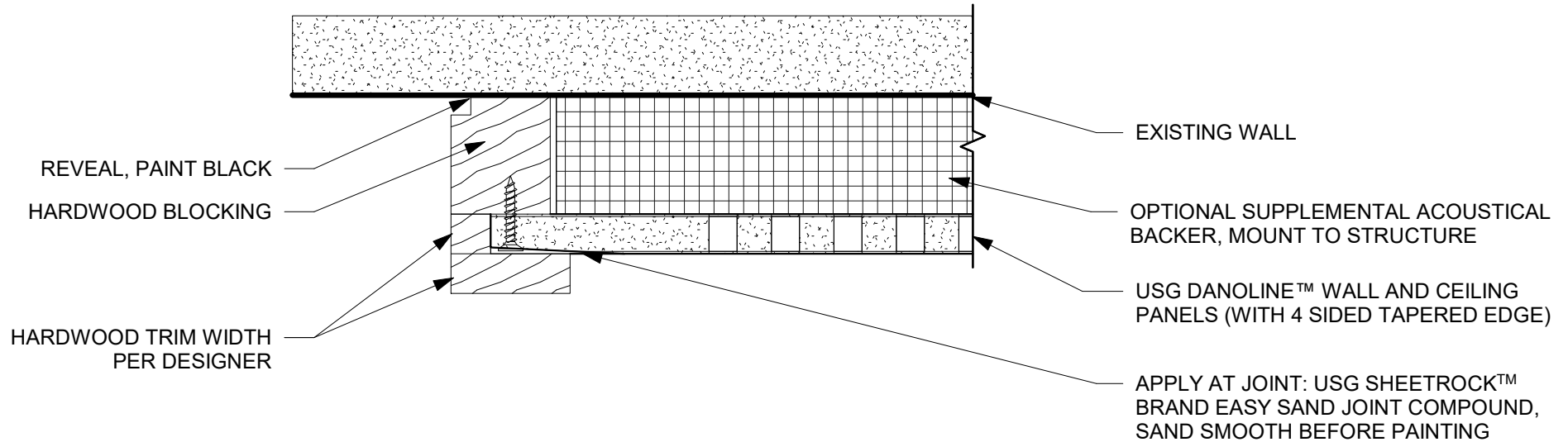
06/15/20 1

SHEET INFORMATION:

A101



USG DANOLINE™ WALL AND CEILING PANEL WITH CASED WOOD EDGE



USG DANOLINE™ WALL AND CEILING PANEL WITH HARDWOOD TRIM



USG Corporation
550 West Adams Street
Chicago, IL 60661 USA
www.usg.com
T. 800-USG4YOU

DISCLAIMER: THE USG PRODUCT INFORMATION CONTAINED HEREIN ARE INTENDED FOR USE AS PRODUCT REFERENCE MATERIAL BY ARCHITECTS, ENGINEERS, AND OTHER DESIGN PROFESSIONALS, CONTRACTORS, BUILDING CODE OFFICIALS, OR OTHER COMPETENT CONSTRUCTION INDUSTRY TRADE PROFESSIONALS HAVING AN INTEREST IN THE SELECTION, SPECIFICATION, AND USE OF PRODUCTS MANUFACTURED BY THE SUBSIDIARIES OF USG CORPORATION. THE DRAWINGS ARE INTENDED SOLELY AS TECHNICAL SUPPORT INCIDENT TO THE SALE AND USE OF USG PRODUCTS AND NOT INTENDED TO BE A SUBSTITUTE FOR THE DESIGN REVIEW AND APPROVAL OF THE LICENSED DESIGN PROFESSIONALS FOR THE PROJECT. THESE MATERIALS MAY BE PRINTED AND/OR TRANSFERRED ELECTRONICALLY SOLELY AS NEEDED BY THE USER. BECAUSE CAD, ELECTRONIC FILES AND BIM (BUILDING INFORMATION MODELING) FILES CAN BE MODIFIED BY OTHER PARTIES, WITHOUT NOTICE OR INDICATION OF SUCH MODIFICATIONS, MODIFICATION OF USG PRODUCT CAD DRAWINGS IS THE SOLE RESPONSIBILITY OF THE DESIGN PROFESSIONAL. ©2020 USG CORPORATION.

USG DANOLINE™ WALL AND CEILING PANELS FRAMED EDGE DETAILS - WOOD TRIM

ISSUE RECORD:

06/15/20 1

SHEET INFORMATION:

A102