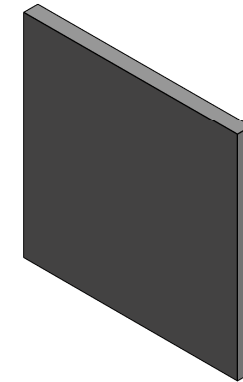


Disclaimer: System details are intended solely as technical support incident to the sale and use of products provided by National Gypsum Company and manufactured by Gold Bond Building Product, LLC, PermaBASE Building Products, LLC and ProForm Finishing Products, LLC. Architects, engineers, design professionals, contractors, builders, building code officials or construction industry professionals should consider this information for the selection, specification and use of products provided by National Gypsum company in this system. Architects, engineers, designers and/or contractors involved should review these details with the authority having jurisdiction (AHJ), governing and/or inspection official at the time of the project submittal to determine if there are any discrepancies with local code or regulatory requirements. A design professional must provide a complete evaluation and verify the suitability of the system for a given application before beginning a project. These system details may be printed and/or transferred electronically as needed by the user, subject to terms and limitations of any applicable license agreement. © 2024 National Gypsum Services Company. Because CAD electronic files and BIM (Building Information Modeling) files can be modified by other parties, without notice or indication of such modifications, modification of CAD and BIM drawings of products provided by National Gypsum Company is the sole responsibility of the design professional.

1. MIN. 25 GAUGE 2-1/2" STEEL STUDS 16" O.C. WITH LATERAL BRACING IN TWO ROWS 1" APART
2. 2-1/2" GLASS FIBER INSULATION EACH ROW
3. 5/8" GOLD BOND FIRE-SHIELD GYPSUM BOARD (FSW, FSW-C, FSW-6, eXP-C, FSK, FSK-C) APPLIED VERTICALLY OR HORIZONTALLY WITH VERTICAL JOINTS CENTERED OVER studs and fastened TO STUDS AND TRACKS WITH 1" TYPE S SCREWS 16" O.C. (MAX 16)
4. TWO LAYERS 5/8" GOLD BOND FIRE-SHIELD GYPSUM BOARD (FSW, FSW-C, FSW-6, eXP-C, SBWB, FSK, FSK-C) APPLIED VERTICALLY OR HORIZONTALLY. BASE LAYER FASTENED TO STUDS AND TRACKS WITH 1" TYPE S SCREWS 16" O.C. (MAX 16). FACE LAYER FASTENED WITH 1-5/8" SCREWS 16" O.C. (MAX 16). VERTICAL JOINTS CENTERED OVER STUDS AND STAGGERED 16" FROM ADJACENT LAYERS. BASE LAYER HORIZONTAL JOINTS NEED NOT BE STAGGERED OR BACKED BY FRAMING. HORIZONTAL JOINTS IN ADJACENT LAYERS STAGGERED MIN. 12".
5. JOINT TAPE AND COMPOUND OVER JOINTS AND FASTENER HEADS (OPTIONAL WHEN SQUARE EDGE BOARD IS USED)



STC 61

SOUND TEST: NGC 2015102

DATE: 10/21/24

V488-DR 212 25eq metal studs 16oc 1+2

SCALE: 1 1/2" = 1'-0"

UL DESIGN: V488

NGC-CW-004

**National
Gypsum®**

© 2024 National Gypsum Services Company