

USG CEILINGS PLUS - DESIGN SOLUTIONS - COLORTEX™ BARZ® + BRILLIANCE® - 2330



NOTE:

1. This Revit asset is provided "As is" and is for geometric information only.
2. USG recommends that the Architect utilize a lighting design professional in evaluating the .ies files provided as a separate download from the Revit files.
3. The lighting information in these assets are for visual use only. Only the .ies files may be used for accurate lighting computation.

GENERAL NOTES:

- These Revit generic model families are digital representations of the USG Ceilings Plus® Design Solutions - COLORTEX™ BARZ®.
- Provided Revit families and material images are representational only. There may be slight dimensional differences from actual manufactured product.
- Typical installation details in both Revit and AutoCAD formats are available on USG.com at <https://www.usg.com>
- Please reference USG literature (located on USG.com) for additional information regarding acoustical performance and perforation options.
- These Revit families are "Face Based Generic" They are to be attached to a Reference Plane, typical.
- These Revit objects are digital representations of the USG Ceilings Plus® Colortex Barz®+Brilliance Design Solutions modules.

INSTRUCTIONS FOR USE:

1. Select desired ceiling tiles from this Revit File.
2. Use the **copy** command and **paste** it into your current project.
3. Under the **Manage tab** select the materials command and Re-path the image files included in the download to your Revit images folder.
4. Apply finishes via the properties menu.



USG Ceilings Plus
6711 East Washington Boulevard
Los Angeles, California 90040, USA
Tel. 800-822-3411

USG DESIGN SOLUTIONS COLORTEX™ BARZ®

DISCLAIMER: THE USG PRODUCT DETAILS CONTAINED HEREIN ARE INTENDED FOR USE AS PRODUCT REFERENCE MATERIAL BY ARCHITECTS, ENGINEERS, OTHER DESIGN PROFESSIONALS, CONTRACTORS, BUILDING CODE OFFICIALS, OR OTHER COMPETENT CONSTRUCTION INDUSTRY TRADE PROFESSIONALS HAVING AN INTEREST IN THE SELECTION, SPECIFICATION AND USE OF PRODUCTS MANUFACTURED BY THE SUBSIDIARIES OF USG CORPORATION. THE DRAWINGS ARE INTENDED SOLELY AS TECHNICAL SUPPORT INCIDENT TO THE SALE AND USE OF USG PRODUCTS AND NOT INTENDED TO BE A SUBSTITUTE FOR THE DESIGN REVIEW AND APPROVAL OF THE LICENSED DESIGN PROFESSIONAL FOR THE PROJECT. THESE MATERIALS MAY BE PRINTED AND/OR TRANSFERRED ELECTRONICALLY SOLELY AS NEEDED BY THE USER. BECAUSE CAD ELECTRONIC FILES AND BIM (BUILDING INFORMATION MODELING) FILES CAN BE MODIFIED BY OTHER PARTIES, WITHOUT NOTICE OR INDICATION OF SUCH MODIFICATIONS, MODIFICATION OF USG PRODUCT CAD AND BIM DRAWINGS IS THE SOLE RESPONSIBILITY OF THE DESIGN PROFESSIONAL. ©2023 USG CORPORATION.

ISSUE RECORD:

08/12/24

REV: DATE:

SCALE:

SHEET INFORMATION:

DS - COLORTEX™ BARZ
+ BRILLIANCE

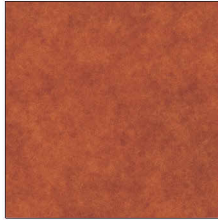
CTBZ-00

USG CEILINGS PLUS - DESIGN SOLUTIONS - COLORTEX™ BARZ® + BRILLIANCE® - 2330

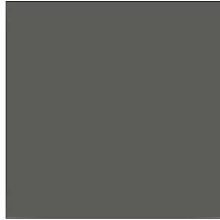
Ash



Bengal



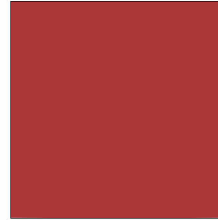
Black



Charcoal



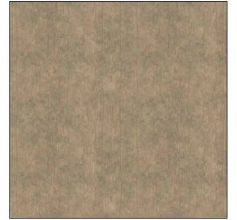
Chili



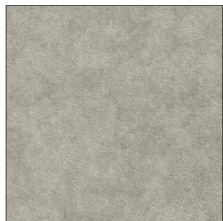
Clay



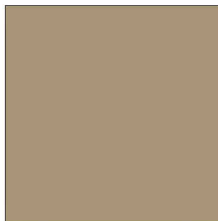
Walnut



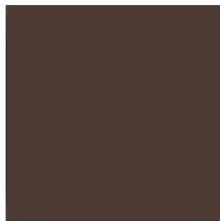
Cloud



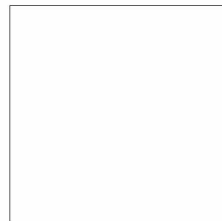
Cocoa



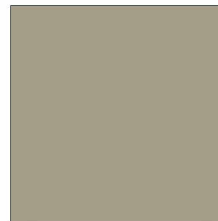
Coffee



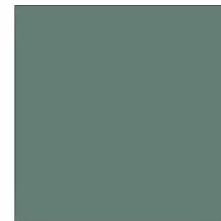
Cream



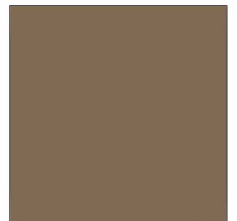
Granite



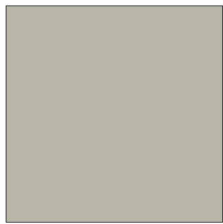
Iceberg



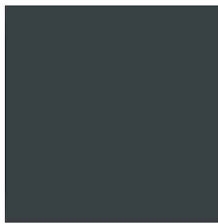
Pecan Oak



Marble



Nautical



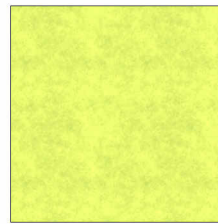
Ocean



Pesto



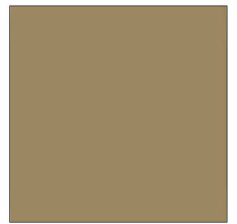
Prairie



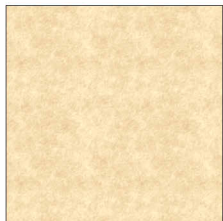
Reef



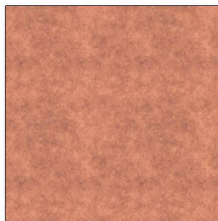
White Oak



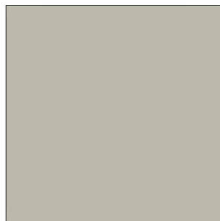
Sand



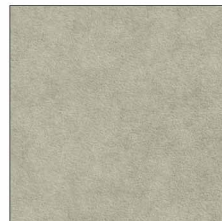
Sedona



Snow



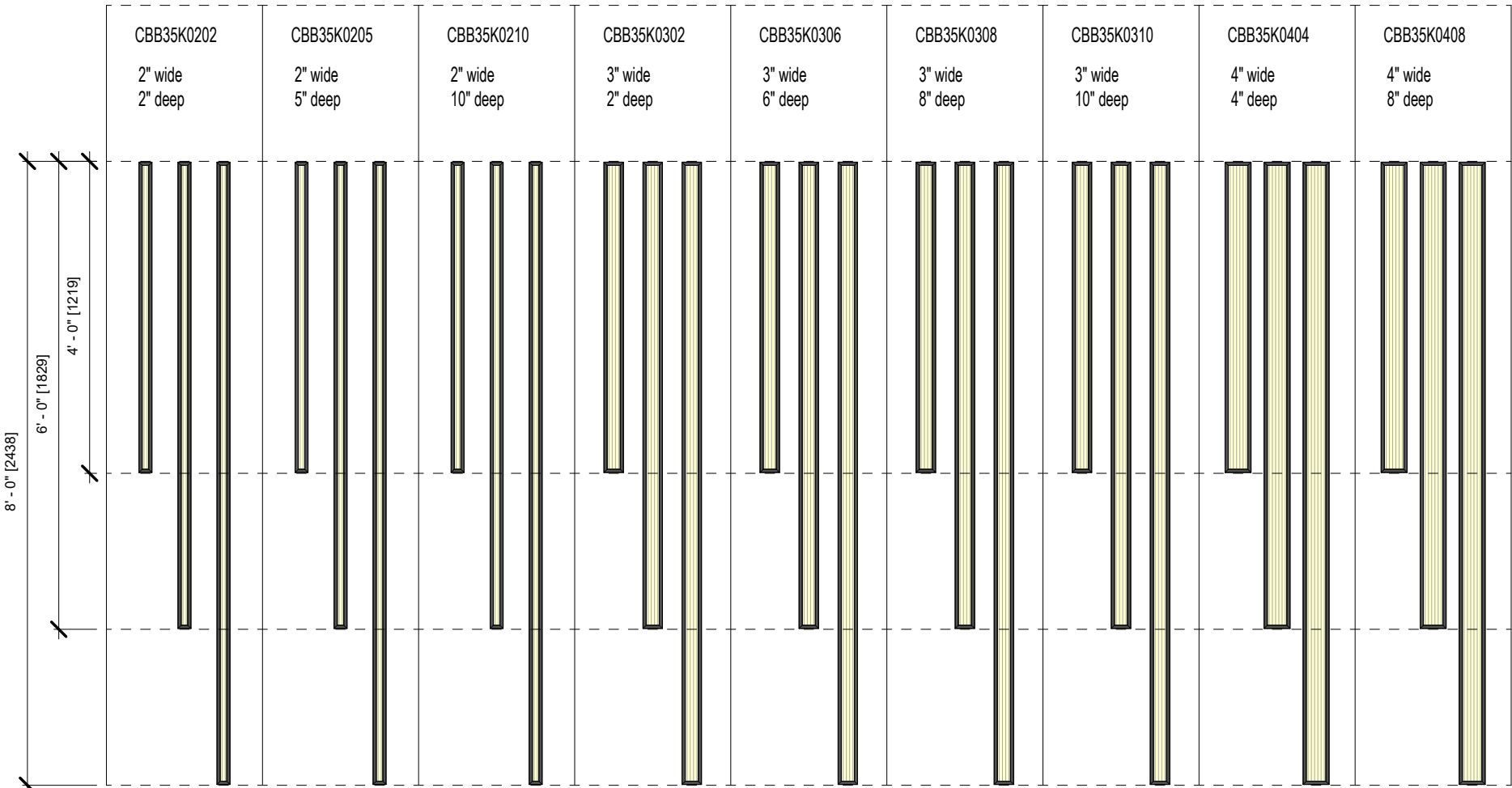
Stone



Summer



USG CEILINGS PLUS - DESIGN SOLUTIONS - COLORTEx™ BARZ® + BRILLIANCE® - 2330



USG **CEILINGS PLUS**
USG Ceilings Plus
6711 East Washington Boulevard
Los Angeles, California 90040, USA
Tel. 800-822-3411

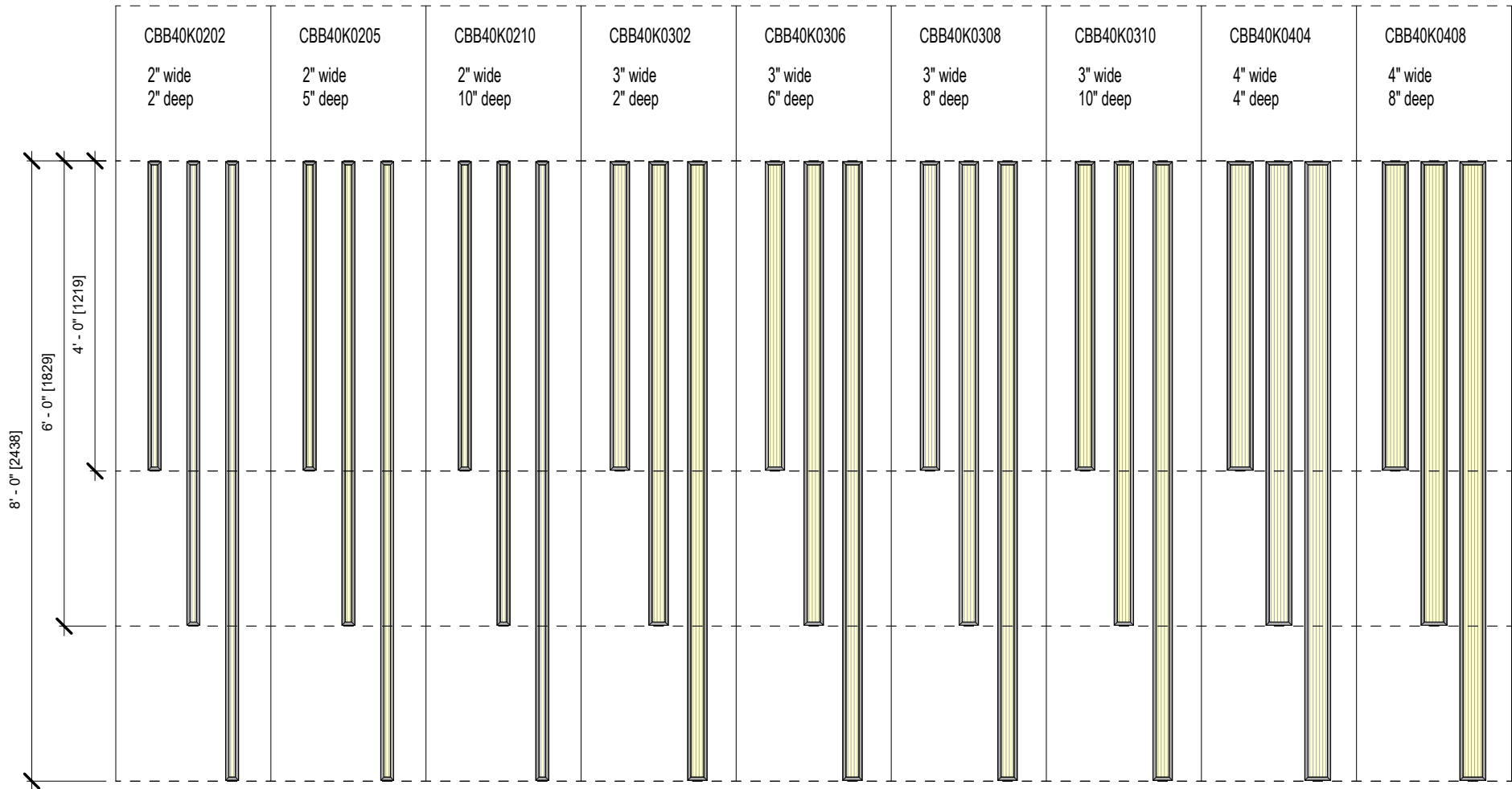
USG DESIGN SOLUTIONS COLORTEx™ BARZ®

DISCLAIMER: THE USG PRODUCT DETAILS CONTAINED HEREIN ARE INTENDED FOR USE AS PRODUCT REFERENCE MATERIAL BY ARCHITECTS, ENGINEERS, OTHER DESIGN PROFESSIONALS, CONTRACTORS, BUILDING CODE OFFICIALS, OR OTHER COMPETENT CONSTRUCTION INDUSTRY TRADE PROFESSIONALS HAVING AN INTEREST IN THE SELECTION, SPECIFICATION AND USE OF PRODUCTS MANUFACTURED BY THE SUBSIDIARIES OF USG CORPORATION. THE DRAWINGS ARE INTENDED SOLELY AS TECHNICAL SUPPORT INCIDENT TO THE SALE AND USE OF USG PRODUCTS AND NOT INTENDED TO BE A SUBSTITUTE FOR THE DESIGN REVIEW AND APPROVAL OF THE LICENSED DESIGN PROFESSIONALS FOR THE PROJECT. THESE MATERIALS MAY BE PRINTED AND/OR TRANSFERRED ELECTRONICALLY SOLELY AS NEEDED BY THE USER, BECAUSE CAD ELECTRONIC FILES AND BIM (BUILDING INFORMATION MODELING) FILES CAN BE MODIFIED BY OTHER PARTIES, WITHOUT NOTICE OR INDICATION OF SUCH MODIFICATIONS, MODIFICATION OF USG PRODUCT CANNOT BE MADE. USG AND BIM DRAWINGS IS THE SOLE RESPONSIBILITY OF THE DESIGN PROFESSIONAL. ©2023 USG CORPORATION.

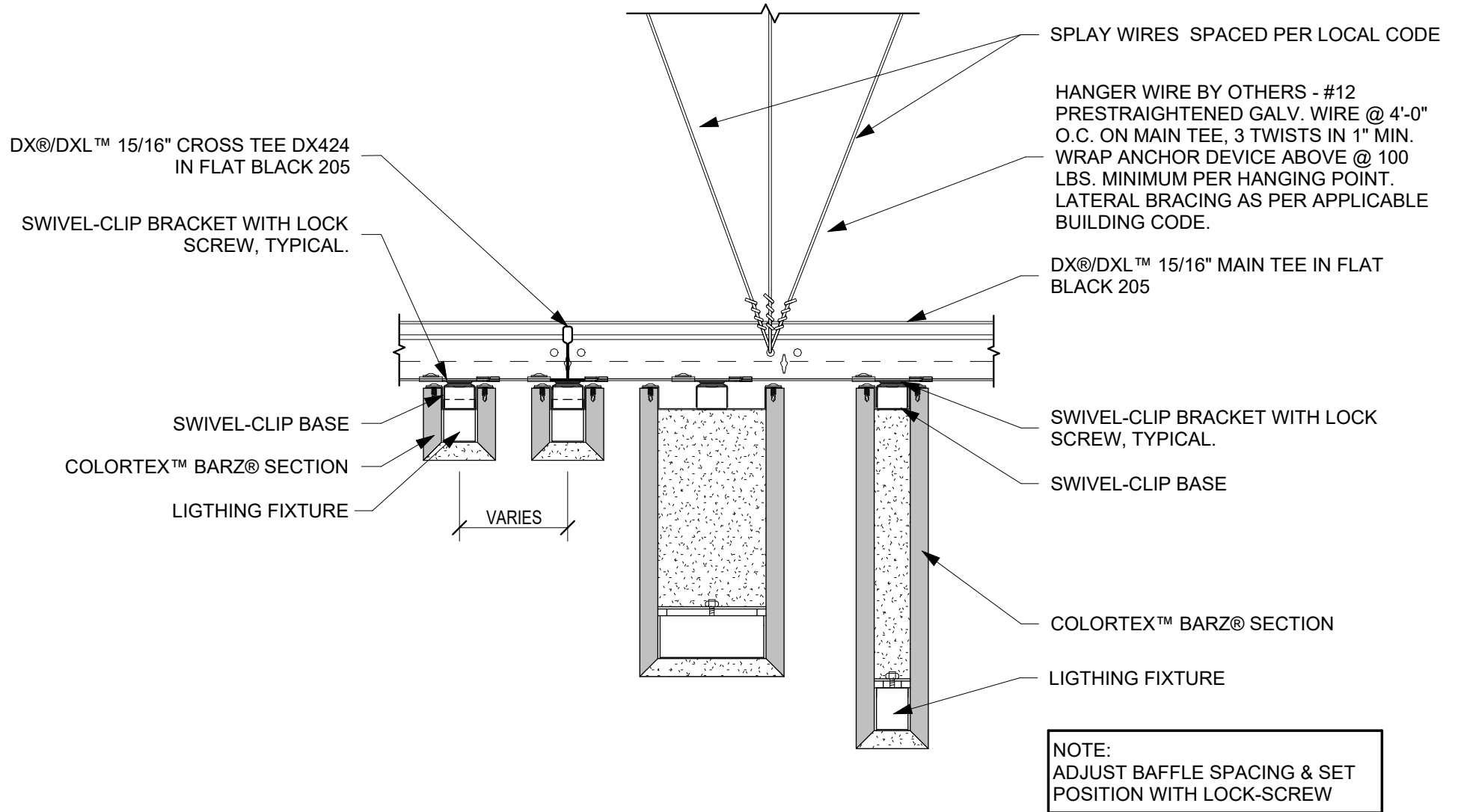
ISSUE RECORD:
08/12/24
REV: **DATE:**
SCALE: 1/2" = 1'-0"

SHEET INFORMATION:
DS - COLORTEx™
BARZ® 3500k
LUMINAIRE
CTBZ-02

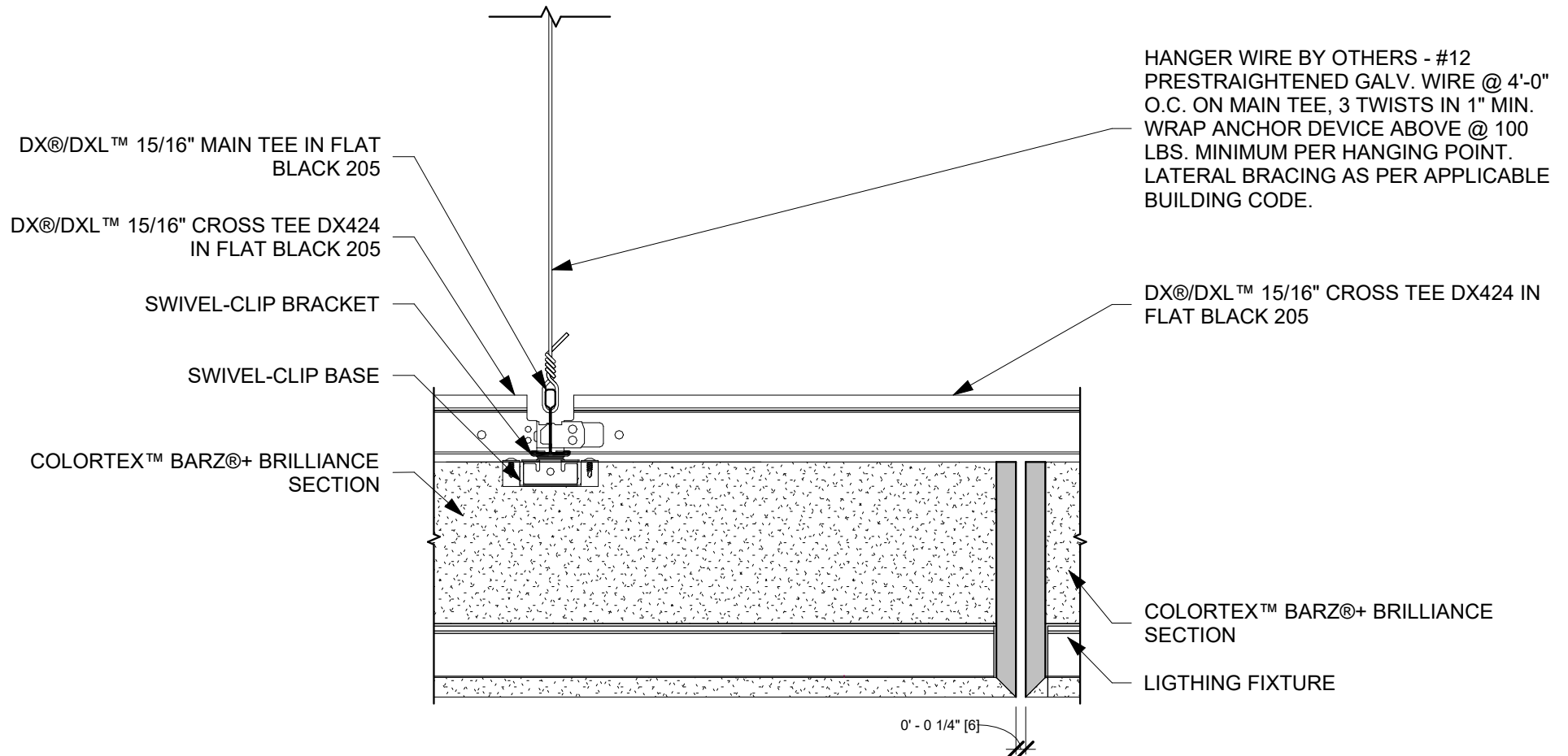
USG CEILINGS PLUS - DESIGN SOLUTIONS - COLORTEX™ BARZ® + BRILLIANCE® - 2330



USG CEILINGS PLUS - DESIGN SOLUTIONS - COLORTEX™ BARZ® + BRILLIANCE® - 2330



USG CEILINGS PLUS - DESIGN SOLUTIONS - COLORTEX™ BARZ® + BRILLIANCE® - 2330



NOTE:
ADJUST BAFFLE SPACING & SET POSITION WITH LOCK-SCREW